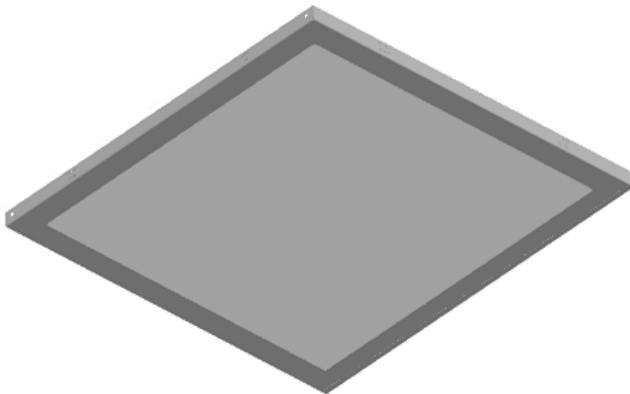


BASIC 60X60 LAY-ON LED PANEL

Flaty Series | Basic LED Lamps



Areas of application

- Hotels, Shops and Shopping Centers,
- Museums, Exhibitions, Conferences and Ballrooms
- Business Centers, Offices and Corridors,
- Halls, Living Rooms and Living Areas
- Schools, Hospitals and Public Institutions
- Prefabricated and Modular Campuses

Products benefits

- The possibility of using three white colors in the same product
- Quick , simple and safe replacement without rewiring
- Low maintenance costs thanks to long lifetime
- Instant-on light , therefore ideally suitable in combination with sensor technology

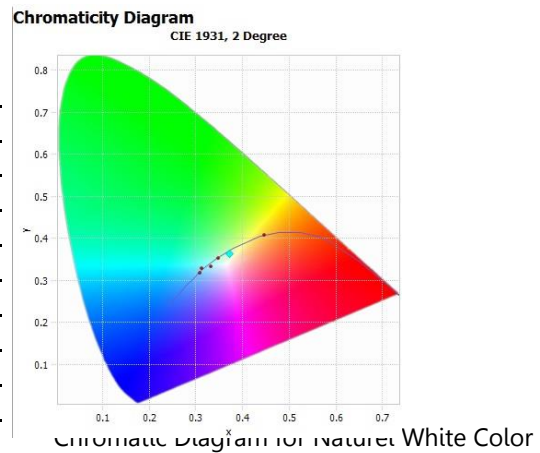
Product features

- Design: Ceiling LED luminaires with metal frame
- Color Temperature: 2700 - 3000 K (Warm White) , 4000 - 4750 K (Natural White) or 6500-7000 K (Cool White)
- Mounting Type: Drywall mounting
- Type Of Protection: IP40
- Lifetime: up to 50,000h
- Warranty Time: See Model Options

Technical Data

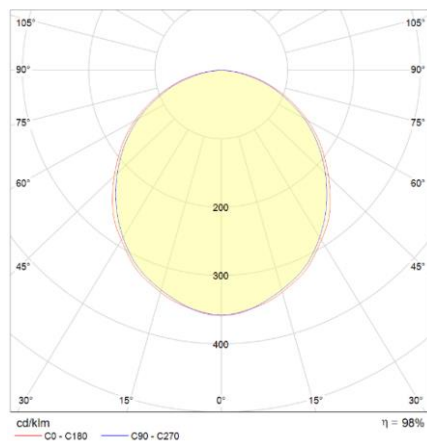
Electrical Data

Nominal input wattage (AC)	33 W
Lamp output wattage (DC)	28.7 W
Nominal input voltage	220 V AC
Nominal input frequency	50/60 Hz
Nominal input current	0.15 A
Driver efficiency	85-90 %
Lumen/watt	117 lm/w
Power Factor λ	≥ 0.90
Output current tolerance	$\pm 5 \%$

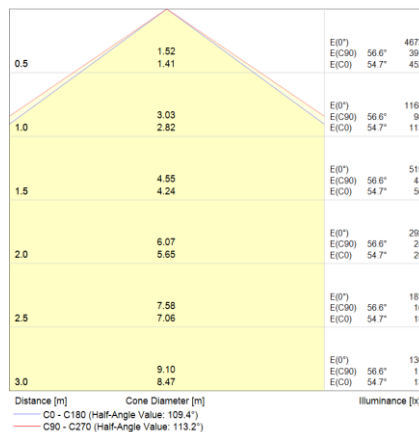


Phometrical Data

Light color	WW	NW	CW
Color temperature	2700 - 3300 K	4000 - 4750 K	6500 - 7000 K
Luminous flux	3300 lm $\pm 3 \%$	3500 lm $\pm 3 \%$	3500 lm $\pm 3 \%$
Color rendering index Ra	> 80 - 85	> 85 - 90	> 82 - 87



Polar Graph for Naturel White Color



Conic Graph for Naturel White Color

Light technical data

Beam angle	Extremely wide distribution, 120°
Light distribution	Symmetric

Environmental Data

Operating Temperature	-20 / +50 °C
Storage Temperature	-30 / +60 °C



Materials

Body material	Sheet Metal
Body color	Ral 9016 bright
Cover material	Sheet Metal
Cover color	Ral 9016 texture matte/Optional

Capabilities

Type of connection	Cable & connector
Color change	3 in 1, manuel
DALI control	Optional
Dimmable	Optional
Emergency lighting kit	Optional

Additional product data

Diffuser material	Polystyrene
Diffuser efficiency	80%-86%
Diffuser type	Double Sided Emboss

Certificates & Standarts

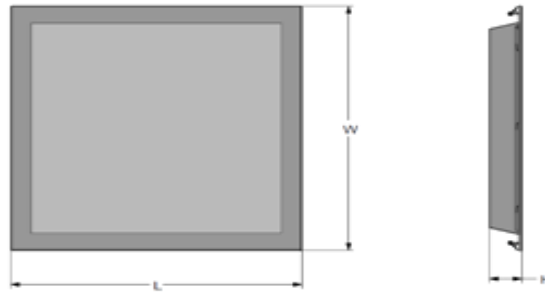
IEC Protection class	Class I
Ingress Protection Rating	IP40
Standarts	TS EN 60598-2-2 , TS EN 60598-1 , TS EN 62471 , TS EN 13032-1 , TS EN 62031
Certificates	CE , TSE

Model Options

MODEL	CODE	COLOR MODE	LUMINOUS FLUX			CRI	Warranty (years)
			WW	NW	CW		
BRONZE	AXP.FLT.0606.BSC.LYN.BNZ	1	3300 lm	3400 lm	3450 lm	Ra> 80	2
TITANIUM	AXP.FLT.0606.BSC.LYN.TNM	1	3350 lm	3450 lm	3500 lm	Ra> 85	3
SILVER	AXP.FLT.0606.BSC.LYN.SLV	3	3300 lm	3500 lm	3450 lm	Ra> 80	2
GOLD	AXP.FLT.0606.BSC.LYN.GLD	3	3350 lm	3600 lm	3500 lm	Ra> 85	3
PLATINUM	AXP.FLT.0606.BSC.LYN.PLT	3	3350 lm	3600 lm	3500 lm	Ra> 85	3

Dimensions & Weight

Length (L)	595 mm
Width (W)	595 mm
Height (H)	55 mm
Product weight	3.3 kg
Mounting hole length (L1)	576 mm
Mounting hole width (W1)	576 mm
Mounting type	Recessed mounting



Logistical data

Product code	Product description	Single Packaging Dimensions (L x W x H)	Single Packaging Volume (dm3)	Single Packaging Gross Weight	Multi Packaging unit	Multi Packaging Dimensions (L x W x H)	Multi Packaging Volume (dm3)	Multi Packaging Gross Weight
	LAY-ON 60x60	620x620x90 mm	34,596	4,2 kg				

The mentioned product code describes the smallest quantity unit which can be ordered. One shipping unit can contain one or more single products. When placing an order, for the quantity please enter single or multiples of a shipping unit.

Disclaimer

Subject to change without notice. Errors and omission excepted. Always make sure to use the most recent release.