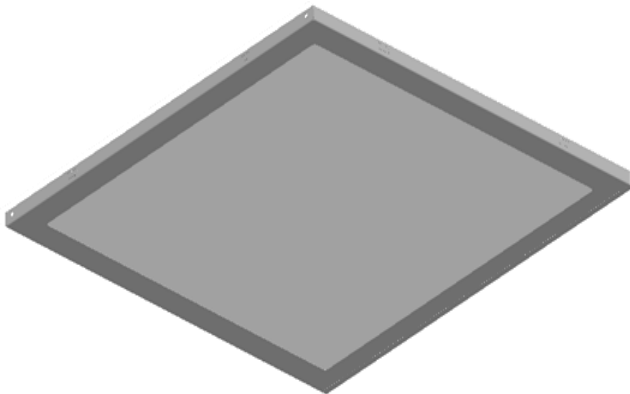


## AXP FLATY 6060 LAY-ON

Backlight Series | Basic LED Panel Luminaires



### Areas of application

- Hotels, Shops and Shopping Centers,
- Museums, Exhibitions, Conferences and Ballrooms
- Business Centers, Offices and Corridors,
- Halls, Living Rooms and Living Areas
- Schools, Hospitals and Public Institutions
- Prefabricated and Modular Campuses

### Products benefits

- The possibility of using three white colors in the same product
- Quick , simple and safe replacement without rewiring
- Low maintenance costs thanks to long lifetime
- Instant-on light , therefore ideally suitable in combination with sensor technology

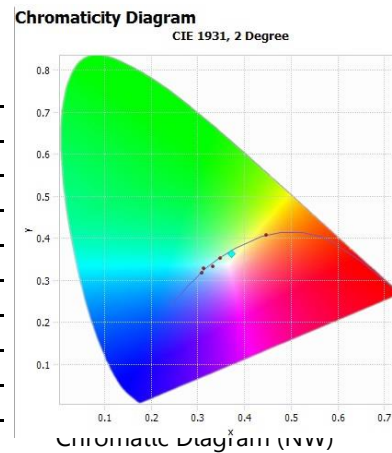
### Product features

- Design: Ceiling LED luminaires with metal frame
- Color Temperature: 2700 - 3000 K ( Warm White ) , 4000 - 4750 K ( Natural White ) or 6500-7000 K (Cool White)
- Mounting Type: Drywall mounting
- Type Of Protection: IP40
- Lifetime: up to 50,000h
- Warranty Time: See Model Options

## Technical Data

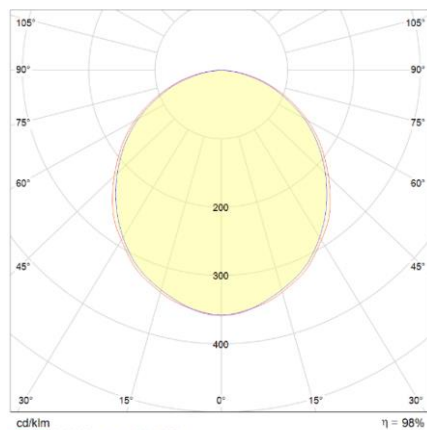
### Electrical Data

Nominal input wattage (AC)	33 W
Lamp output wattage (DC)	28.7 W
Nominal input voltage	220 V AC
Nominal input frequency	50/60 Hz
Nominal input current	0.15 A
Driver efficiency	85-90 %
Lumen/watt	117 lm/w
Power Factor $\lambda$	$\geq 0.90$
Output current tolerance	$\pm 5 \%$

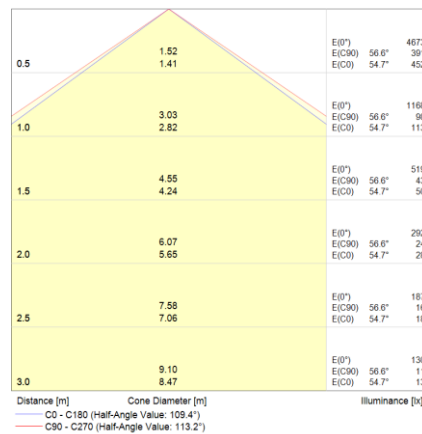


### Phometrical Data

Color temperature	2700 - 3300 K	4000 - 4750 K	6500 - 7000 K
Luminous flux	2900 - 3000 lm	3200 - 3400 lm	3150 - 3250 lm
Light color (Destination)	WW	NW	CW
Color rendering index Ra	> 80 - 85	> 85 - 90	> 82 - 87



Polar Graph for Naturel White Color



Conic Graph for Naturel White Color

### Light technical data

Beam angle	Extremely wide distribution, 120°
Light distribution	Symmetric

### Environmental Data

Operating Temperature	-20 / +50 °C
Storage Temperature	-30 / +60 °C

## Materials

<b>Body material</b>	Sheet Metal
<b>Body color</b>	Ral 9016 bright
<b>Cover material</b>	Sheet Metal
<b>Cover color</b>	Ral 9016 texture matte/Optional

## Capabilities

<b>Type of connection</b>	Cable & connector
<b>Color change</b>	3 in 1, manuel
<b>DALI control</b>	Optional
<b>Dimmable</b>	Optional
<b>Emergency lighting kit</b>	Optional

## Additional product data

<b>Diffuser material</b>	Polystyrene
<b>Diffuser efficiency</b>	80%-86%
<b>Diffuser type</b>	Double Sided Emboss

## Certificates & Standarts

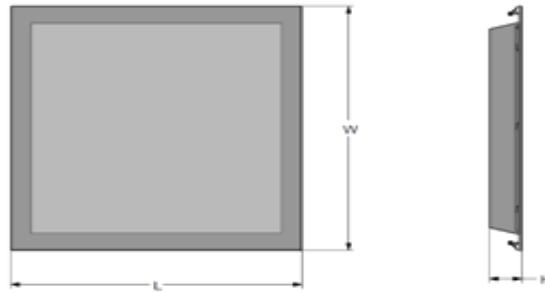
<b>IEC Protection class</b>	Class I
<b>Ingress Protection Rating</b>	IP40
<b>Standarts</b>	TS EN 60598-2-2, TS EN 60598-1 , TS EN 62471, TS EN 13032-1 , TS EN 62031
<b>Certificates</b>	CE, TSE

## Model Options

MODEL	CODE	COLOR MODE	COLOR	LUMEN	CRI	Warranty
BRONZE	AXP.FLT.0606.BSC.LYN.BNZ	1	WW/NW/CW	3300lm	Ra> 80	2 Years
TITANIUM	AXP.FLT.0606.BSC.LYN.TNM	1	WW/NW/CW	3400lm	Ra> 85	3 Years
SILVER	AXP.FLT.0606.BSC.LYN.SLV	3	WW-NW-CW	3500lm	Ra> 80	2 Years
GOLD	AXP.FLT.0606.BSC.LYN.GLD	3	WW-NW-CW	3600lm	Ra> 85	3 Years
PLATINUM	AXP.FLT.0606.BSC.LYN.PLT	3	WW-NW-CW	3600lm	Ra> 85	3 Years

## Dimensions & Weight

<b>Length ( L )</b>	595 mm
<b>Width ( W )</b>	595 mm
<b>Height ( H )</b>	60 mm
<b>Product weight</b>	3.3 kg
<b>Mounting hole length ( L1 )</b>	576 mm
<b>Mounting hole width ( W1 )</b>	576 mm
<b>Mounting type</b>	Recessed mounting



## Logistical data

Product code	Product description	Single Packaging Dimensions (L x W x H)	Single Packaging Volume ( dm3 )	Single Packaging Gross Weight	Multi Packaging unit	Multi Packaging Dimensions (L x W x H)	Multi Packaging Volume ( dm3 )	Multi Packaging Gross Weight
	LAY-ON 60x60	620x620x90 mm	34,596	4,2 kg				

The mentioned product code describes the smallest quantity unit which can be ordered. One shipping unit can contain one or more single products. When placing an order, for the quantity please enter single or multiples of a shipping unit.

## References / Links

Driver OSRAM  
-Osram Driver Datasheet

## Disclaimer

Subject to change without notice. Errors and omission excepted. Always make sure to use the most recent release.