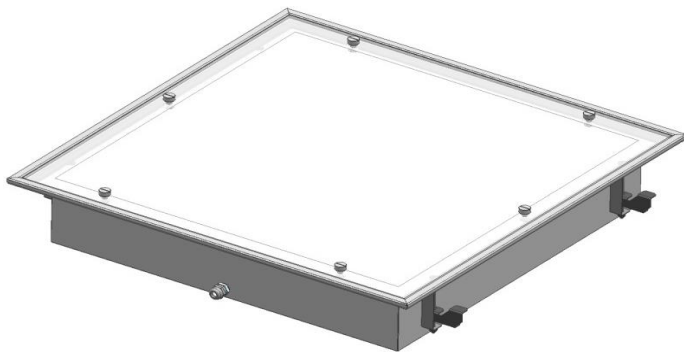


AXP INTEGRY 60x60 LED PANEL

Integry Series | AXP Integry LED Lamps



Areas of application

- Sterilized indoor areas
- Hospitals, Pharmacies and Healthcare premises
- Laboratories and Cleanrooms
- Food industry and Kitchens
- Premises with hygiene requirements

Products benefits

- The possibility of using three white colors in the same product
- Excellent functional cleanroom performance
- Energy savings of up to 50 % compared to conventional luminaires
- No IR or UV radiation
- Easy and quick installation
- High protection against dust and water. (IP65)

Product features

- Flush-mounted and Surface mounted
- Electrostatic powder coated DKP sheet.
- Opal diffuser with prismatic surface, providing homogenous light
- Tempered clear glass.
- $\geq 50,000$ h lifetime, high efficiency and high color quality index
- Natural White, Cool White, Natural White and 3in1 CCT options
- Constant current LED driver with high efficiency,
- $-25^{\circ}\text{C} / + 50^{\circ}\text{C}$ operating ambient temperature range

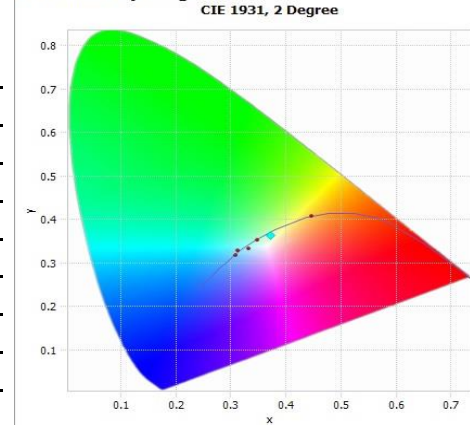


Technical Data

Electrical Data

Nominal input wattage (AC)	33 W
Lamp output wattage (DC)	28,7 W
Nominal input voltage	220 V AC
Nominal input frequency	50/60 Hz
Nominal input current	0.15 A
Driver efficiency	85-90 %
LED forward current	117 lm/w
Power Factor λ	≥ 0.90
Output current tolerance	$\pm 5 \%$

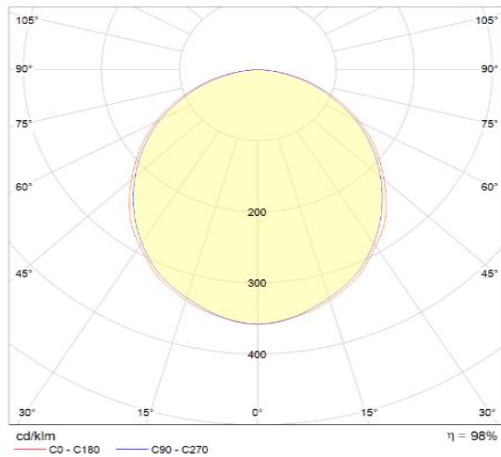
Chromaticity Diagram



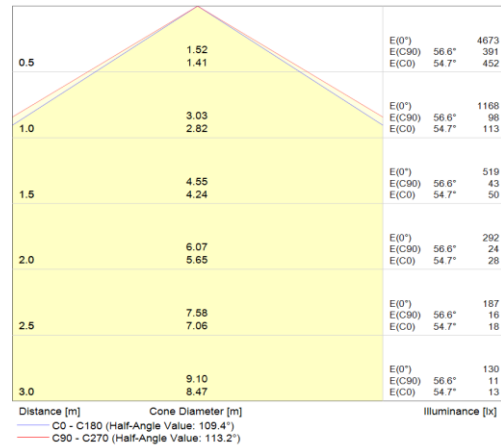
Chromatic Diagram (NW)

Photometrical Data

Color temperature	2700 - 3300 K	4000 - 4750 K	6500 - 7000 K
Luminous flux	3300 - 3400 lm	3600 - 3800 lm	3400 - 3500 lm
Light color (Destination)	WW	NW	CW
Color rendering index Ra	> 80 - 85	> 85 - 90	> 82 - 87



Polar Graph for Natural White Color



Conic Graph for Natural White Color

Light technical data

Beam angle	Extremely wide distribution, 120°
Light distribution	Symmetric



Temperatures

Operating Temperature	-20...+50 °C
Storage Temperature	-30 / +60

Materials

Body material	Sheet Metal
Body color	Ral 9016 or 9006 bright
Cover material	Sheet Metal
Cover color	Ral 9016 or 9006 texture matte

Capabilities

Type of connection	Cable & connector
Color change	3 in 1, manuel
DALI control	Optional
Dimmable	Optional
Emergency lighting kit	Optional

Additional product data

Diffuser material	Tempered glass
Diffuser efficiency	80%-86%
Diffuser type	Single ragged surface

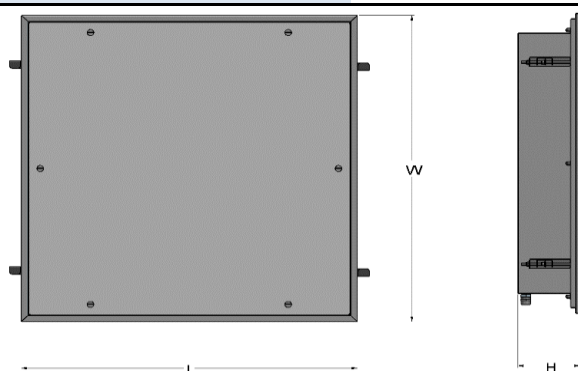
Certificates & Standarts

IEC Protection class	Class II
Ingress Protection Rating	IP65
Standarts	TS EN 60598-2-22 , TS EN 60598-1 , TS EN 62471 , TS EN 13032-1 , TS EN 62031
Certificates	CE , TSE



Dimensions & Weight

Length (L)	595 mm
Width (W)	595 mm
Height (H)	110 mm
Product weight	8,5 kg
Mounting hole length (L1)	575 mm
Mounting hole width (W1)	575 mm
Mounting type	Recessed mounting



Logistical data

Product code	Product description	Single packaging dimensions (L x W x H)	Single packaging volume (dm3)	Single packaging gross weight	Multi packaging unit	Multi packaging dimensions (L x W x H)	Multi packaging volume (dm3)	Multi packaging gross weight

The mentioned product code describes the smallest quantity unit which can be ordered. One shipping unit can contain one or more single products. When placing an order, for the quantity please enter single or multiples of a shipping unit.

References / Links

Driver OSRAM

Disclaimer

Subject to change without notice. Errors and omission excepted. Always make sure to use the most recent release.

